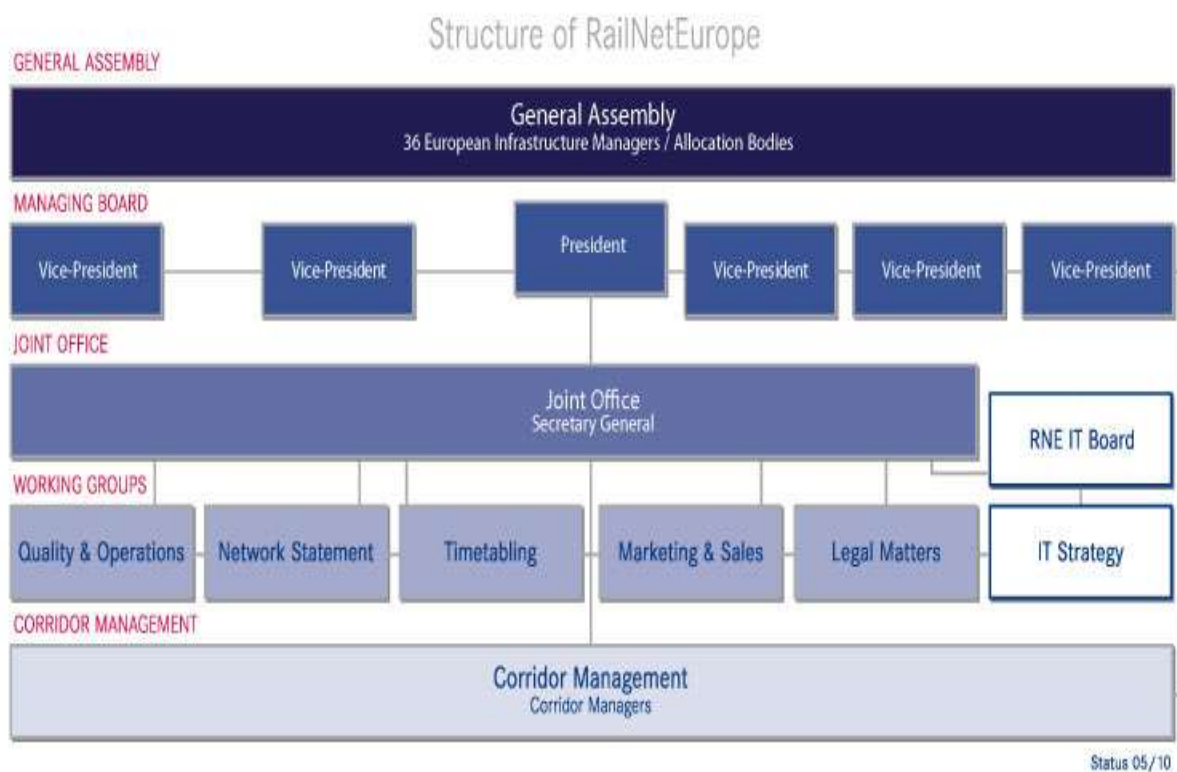
 The National Railway Company “CFR” SA	CFR Network Statement	March 01, 2013 Version 5.0
Country: Romania	Annex 2	Page: 1

RNE ORGANISATION AND OBJECTIVES

On January 2004, some railway infrastructure managers decided to set up a common organisation in order to facilitate the international traffic on the European railway infrastructure, with its headquarters in Vienna.

RNE comprises 38 members, managing 244,000 km of railway infrastructure and cooperating with over 140 RUs from the European business field.

RNE has the following organisation:



RNE’s main objective is to promote the European railway business field from the point of view of the railway infrastructure to the benefit of all the infrastructure managers.

For this purpose, RNE focuses on the entire railway process, inclusively on the harmonisation of the work environment and the long-term planning of the train traffic, the marketing, sales and operating activity, including after-sales services such as monitoring and reporting.