



CFR NETWORK STATEMENT - 2022

ANNEX 2 **RAILNETEUROPE - ORGANIZATION AND OBJECTIVES**

Validity: 12.12.2021 – 11.12.2022

Version: 11.0.1

Update: 01.09.2021

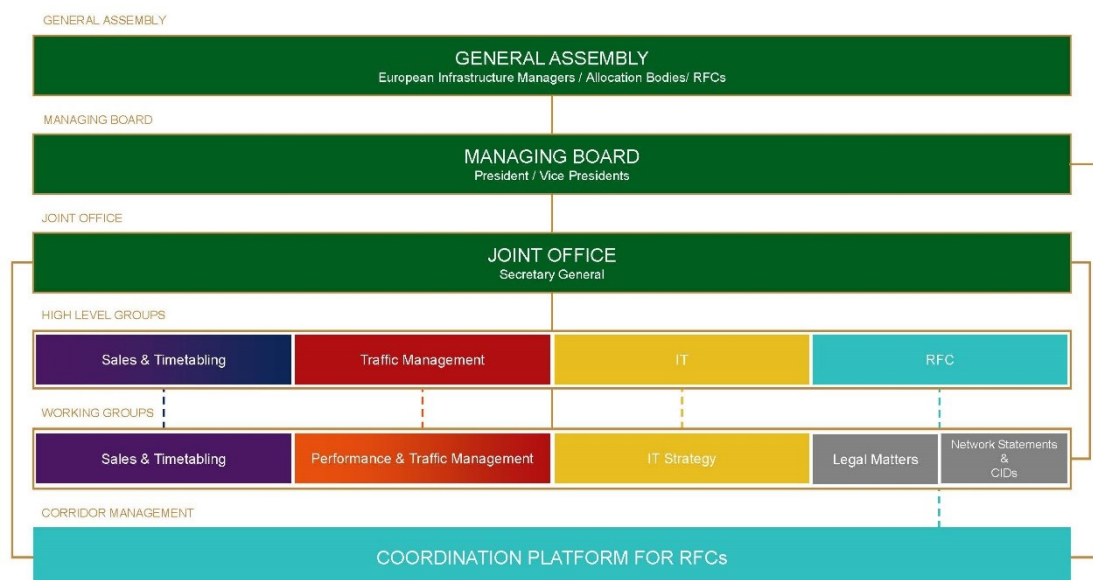


COMPANIA NATIONALA DE CAI FERATE CFR SA

RailNetEurope was set up in 2004 to help meet the challenges facing the international rail sector. This had to be done by providing solutions for all RNE members, as well as their customers and business partners. RNE facilitates the international operational activity of its members, and its role is also to provide support in complying with the European legal framework.

RNE's mission is to help its members meet the challenges of the rapidly changing railway sector in Europe and to promote international rail traffic. Operating as an umbrella organization, most of the RNE's work is carried out through permanent working groups and project teams, which are divided into several areas of activity.

Following a decision of the RNE General Assembly of 8 December 2016, a new working group, the Working Group on Temporary Capacity Restrictions (TCR WG), is currently being set up. In addition, RNE has become a member of the PRIME Platform, which strengthens the dialogue between the European Commission and InfrastructureManagers..



Sursa: <http://rne.eu/organisation/rne-approach-structure/>

RailNetEurope has adopted the typical structure of an international organization. At least twice a year, the RNE General Assembly takes decisions. They are prepared by a board of directors that meets about five times a year and also oversees the work of all ad hoc and permanent RNE groups. The day-to-day work of these groups is coordinated and managed at the RNE Joint Office in Vienna, which is also responsible for the administration, finances and communication of the Association.

In 2014, it was decided to set up High Level Groups (HLGs) in the following areas: rail freight corridors, IT, sales and scheduling and traffic management. The high-level groups were tasked with providing input to the RNE strategy, proposing projects and stimulating the implementation of project results as a first level of escalation.