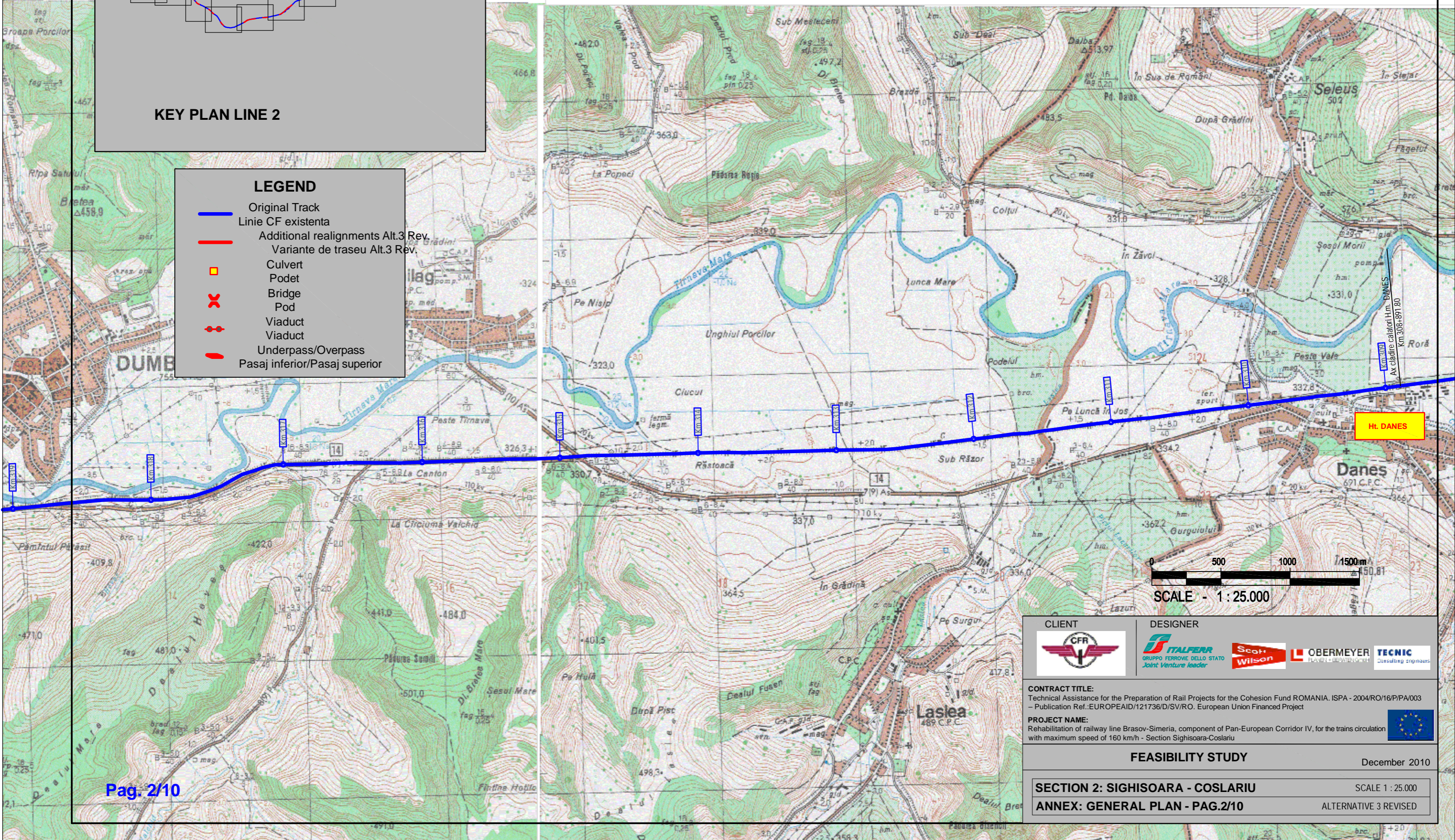


**LEGEND**

- Original Track
- Linie CF existenta
- Additional realignments Alt.3 Rev.
- Variante de traseu Alt.3 Rev.
- Culvert
- Podet
- Bridge
- Pod
- Viaduct
- Viaduct
- Underpass/Overpass
- Pasaj inferior/Pasaj superior



<p>CLIENT</p>		<p>DESIGNER</p>		
<p>CONTRACT TITLE:</p> <p>Technical Assistance for the Preparation of Rail Projects for the Cohesion Fund ROMANIA. ISPA - 2004/RO/16/PA/003 - Publication Ref.:EUROPEAID/121736/D/SV/RO. European Union Financed Project</p>				
<p>PROJECT NAME:</p> <p>Rehabilitation of railway line Brasov-Simeria, component of Pan-European Corridor IV, for the trains circulation with maximum speed of 160 km/h - Section Sighisoara-Coslariu</p>				
<p><b>FEASIBILITY STUDY</b></p>				<p>December 2010</p>
<p><b>SECTION 2: SIGHISOARA - COSLARIU</b></p>				<p>SCALE 1 : 25.000</p>
<p><b>ANNEX: GENERAL PLAN - PAG.2/10</b></p>				<p>ALTERNATIVE 3 REVISED</p>