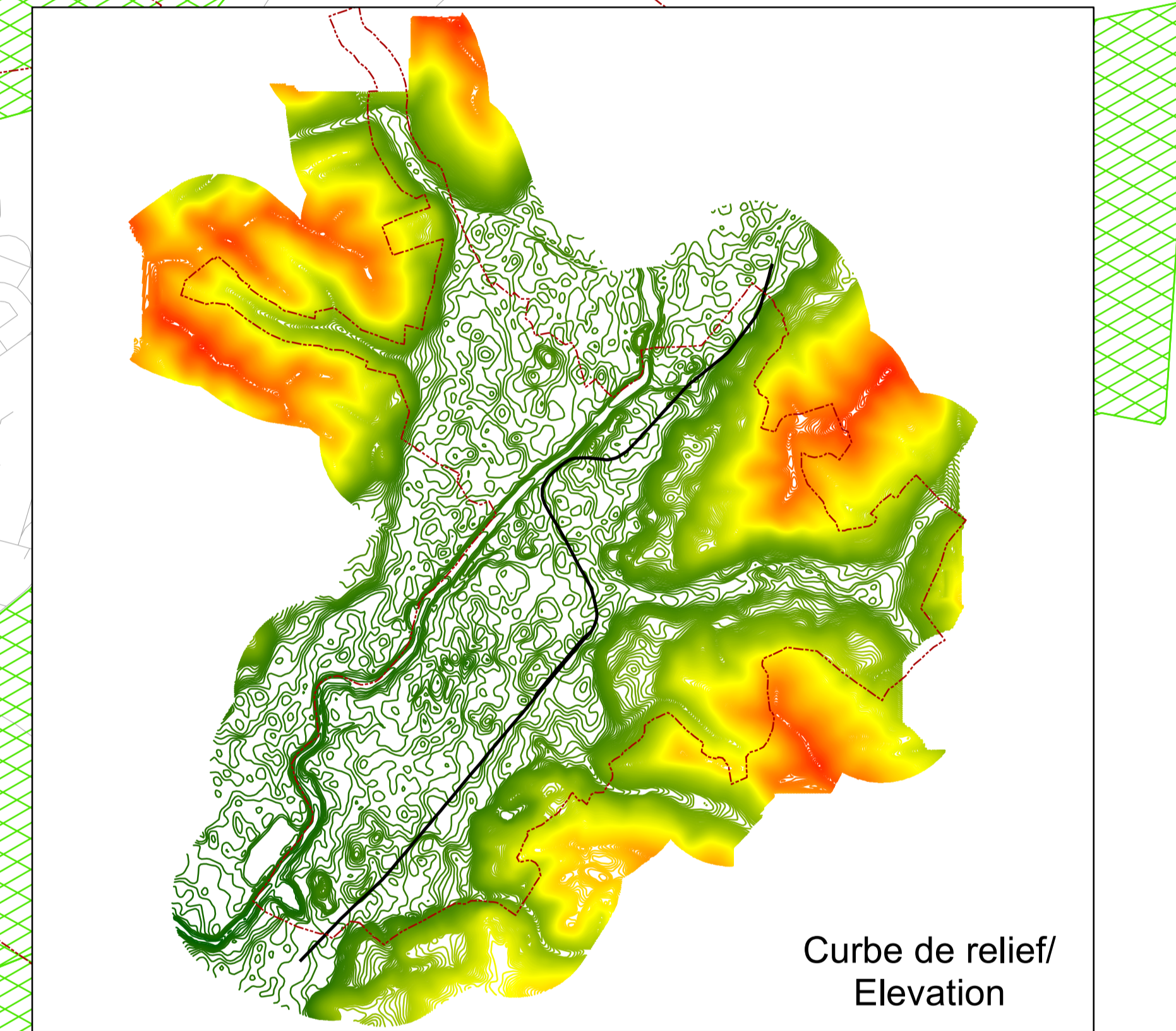
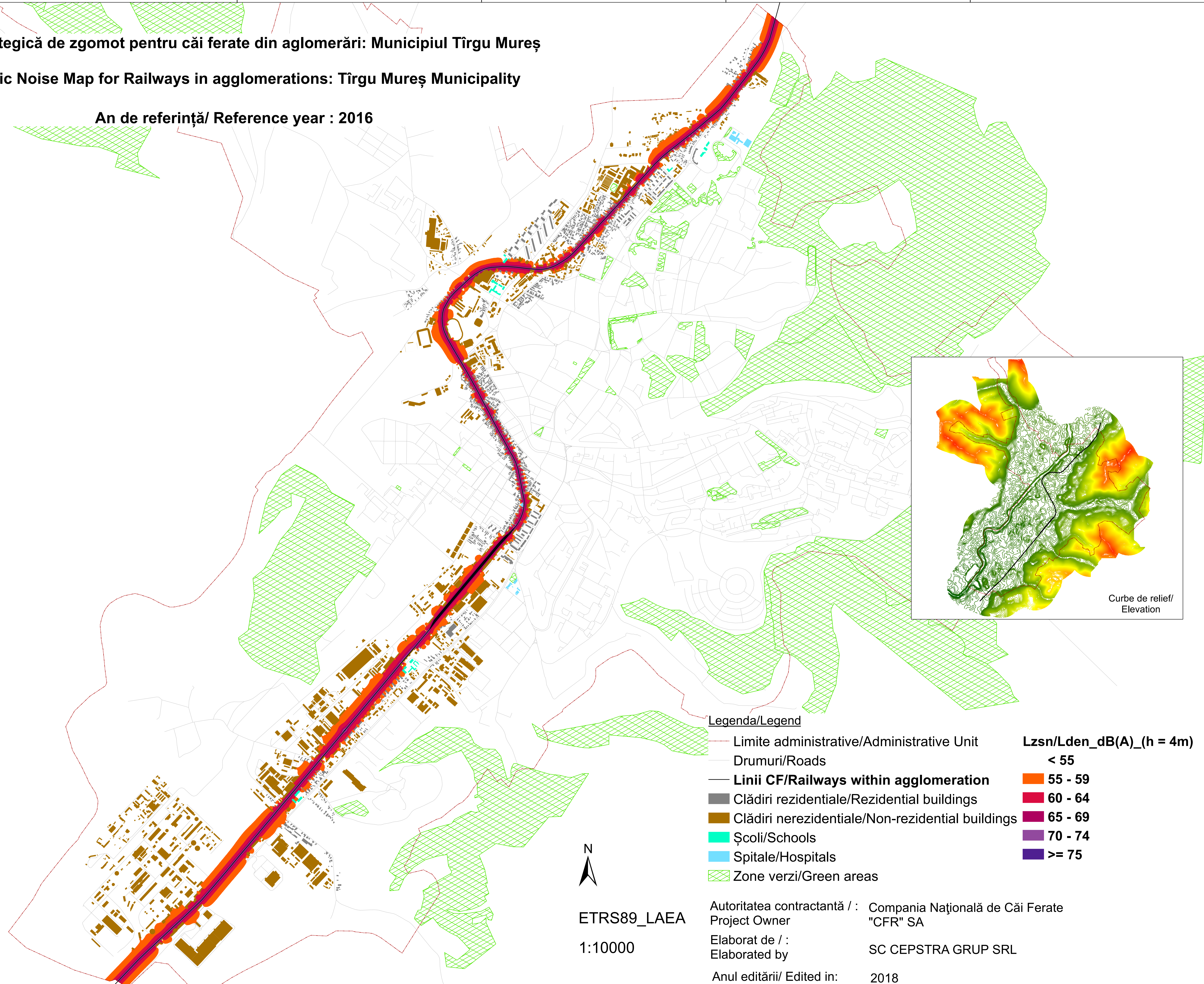


# Hartă strategică de zgomot pentru căi ferate din aglomerări: Municipiul Tîrgu Mureș

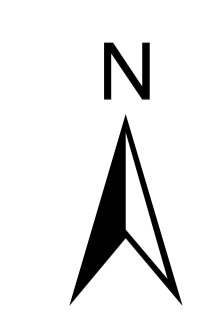
## Strategic Noise Map for Railways in agglomerations: Tîrgu Mureș Municipality

An de referință/ Reference year : 2016



### Legenda/Legend

- |   |  |                                 |
|---|--|---------------------------------|
| — | Limite administrative/Administrative Unit        | <b>Lzsn/Lden_dB(A)_(h = 4m)</b> |
| — | Drumuri/Roads                                    | < 55                            |
| — | <b>Linii CF/Railways within agglomeration</b>    | <b>55 - 59</b>                  |
| ■ | Clădiri rezidențiale/Rezidential buildings       | <b>60 - 64</b>                  |
| ■ | Clădiri nerezidențiale/Non-residential buildings | <b>65 - 69</b>                  |
| ■ | Școli/Schools                                    | <b>70 - 74</b>                  |
| ■ | Spitale/Hospitals                                | <b>&gt;= 75</b>                 |
| ■ | Zone verzi/Green areas                           |                                 |



ETRS89\_LAEA

1:10000

Autoritatea contractantă / : Compania Națională de Căi Ferate  
Project Owner "CFR" SA

Elaborat de / : SC CEPSTRA GRUP SRL  
Elaborated by

Anul editării/ Edited in: 2018